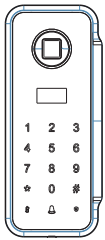


## Wireless attendance access control kits instruction

Dear Users:

Thank you for purchasing our 2.4G wireless attendance access control kit products. In order to let you acknowledge and use this product quickly, please read this instruction sheet before usage.

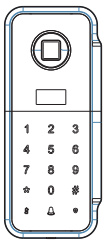
## Product Over-view



M-270



M-202Q

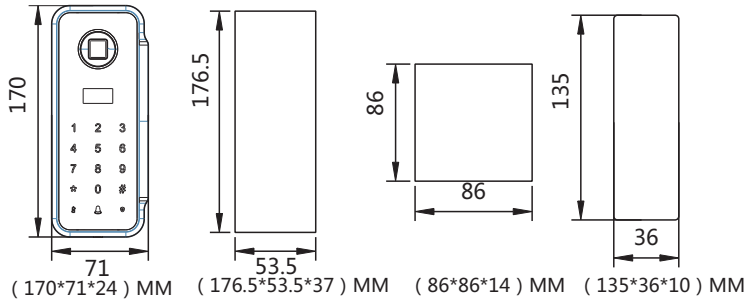


M-271



AUTO

## Dimension



## Parameter

### Wireless fingerprint attendance control machine

Working mode: 2.4G wireless code alignment  
 Working voltage: 4.2V-6.5V (4pcs A battery)  
 Static current:  $\leq 35\mu A$   
 Working current: 70MA  
 User Capacity: 10 Administrators, 490pcs users.  
 (Fingerprint record: 200pcs)  
 Record capacity: 120000pcs  
 Open door method: Fingerprint, card, password.  
 Fingerprint sensor: Semiconductor.  
 FRR:  $\leq 1\%$   
 FAR:  $\leq 0.001\%$   
 Card type: 13.56MHZ M1 card  
 Password: 6 digits  
 Virtual password: 20 digits  
 System locking function: Continuously verify 10 times, system lock 2 minutes (Administrator's fingerprint can unlock)  
 Low voltage alarm: Voltage lower 4.8V prompt  
 External emergency power supply: Micro USB port  
 Working temperature:  $-10^{\circ}C-60^{\circ}C$   
 Relative humidity: 20%-90%

### Wireless square hand touch switch

Working mode: 2.4G wireless code alignment  
 Working voltage: 3V (2pcs Cr2032 Battery)  
 Static current:  $\leq 10\mu A$   
 Working current: 7.5MA  
 Wireless distance: Open space 30 meters  
 Working temperature:  $-10^{\circ}C-60^{\circ}C$   
 Relative humidity: 20%-90%

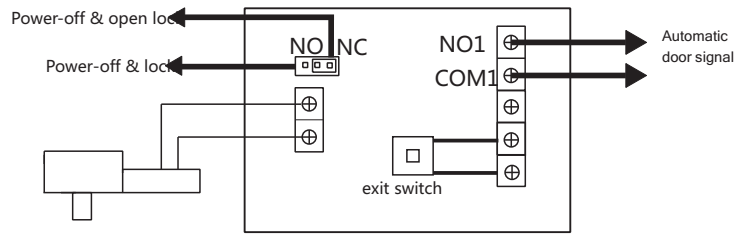
### Wireless long hand touch switch

Working mode: 2.4G wireless code alignment  
 Working voltage: 3V (2pcs Cr2032 battery)  
 Static current:  $\leq 10\mu A$   
 Working current: 7.5MA  
 Wireless distance: Open space 30 meters  
 Working temperature:  $-10^{\circ}C-60^{\circ}C$   
 Relative humidity: 20%-90%

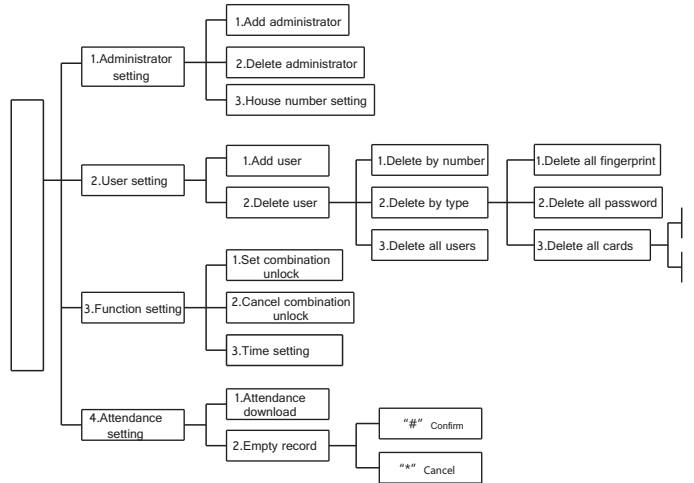
### Power Controller

Working mode: 2.4G wireless code alignment  
 Input voltage:  $220V \pm 10\%$   
 Rated voltage:  $12V \pm 10\%$   
 Rated power: 60W  
 Receiving sensitivity:  $-95\text{dbm}$   
 Door opening delay adjustment: 3S-10S  
 Time difference of unlocking & Opening the door: 0.5S  
 Working temperature:  $-10^{\circ}C-60^{\circ}C$   
 Relative humidity: 20%-90%

## Automatic door wiring diagram



## Attendance Menu structure

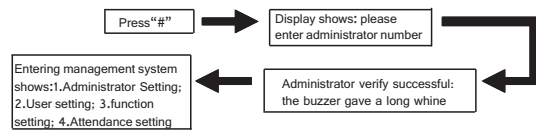


## System initialization

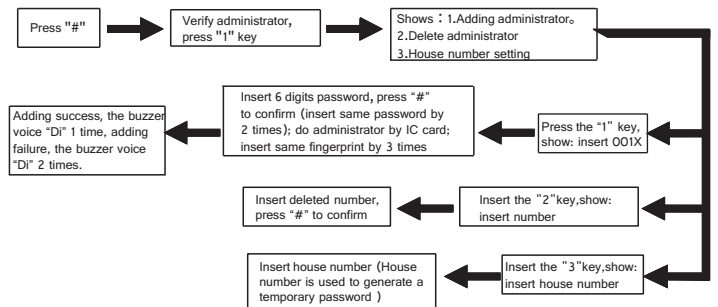
Remove the fixed screw below the fingerprint attendance control machine and remove the fixed iron plate.  
 Remove a battery, press the system initialization button of the back fingerprint access control machine with screwdriver, install the last battery for 3 seconds, and then release the button after hearing the beep voice.  
 (After initialization, the administrators of 001-010 is cleared and the administrator number changed as 000 user and password is 888888.)

## Function setting menu

**Note: Default password is "888888" when no administrator.**



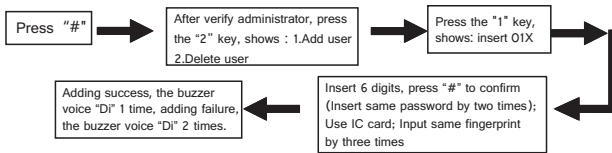
## 1. Administrator setting



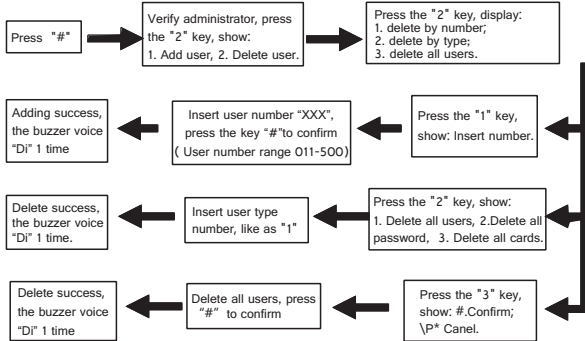
## 2. User Setting

### 1. Add users

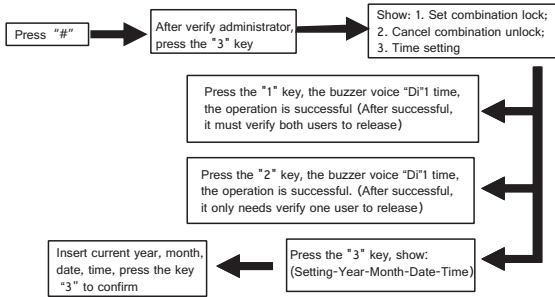
Note: The system automatically assigns add user number.



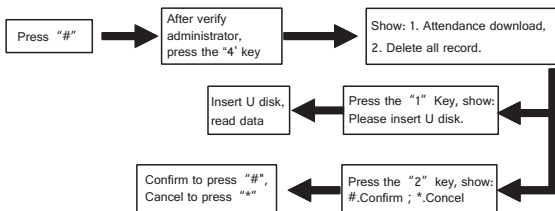
### 2.Delete user



### 3. Function setting



### 4. Attendance setting



## Product combination set

### Others

- 1.System locking function: continuously insert error password 10 times system lock 2 minutes, it can unlock by administrator fingerprint or wait 2 minutes for automatic unlocking.
2. Password peeping prevention function: Insert 6-20 digits and press "#" to confirm.The lock can be unlocked only if the correct password has been entered continuously in the digits entered.
- 3.Power voltage lower 4.8V, the voice prompts and the low voltage indicator lights up when the door is opened each time. Power voltage lower 4V, the door can't be opened. Please attention to replace battery.
- 4.Requires time setting synchronization first
- 5.Download attendance data, insert U disk, entering the menu-attendance setting - attendance download.

### Special function key description

1. Press "8" key for 3 seconds for fingerprint verification
2. Press "9" key for 3 seconds for matching code function
3. The doorbell key is valid only with the company's 2.4G wireless doorbell.

### Code Method

#### Code between power and fingerprint access control

fingerprint access control : press the learning key on the power controller, and the blue learning light will be on.Press the "9" button on the fingerprint access control machine within 5 seconds to hear a buzzer in 3 seconds, release the button, or directly verify the effective opening of the door. The blue learning lamp flashes for 2 times mean the success of learning

#### Code between power supply and out switch

press the learning key on the power controller, the blue learning light is on.Press the study button on the door switch within 5 seconds.Or trigger a wireless door switch, blue learning light flashing 2 mean the success of learning.

Delete method: keep press the learning button for 5 seconds, and the blue light flashes quickly to delete all the codes can not delete the single product

Normally open function: when the door needs to be opened for a long time, it can trigger the door switch for more than 5 consecutive seconds. When the indicator light flashes, the receiver will go into the normally open mode. When touch the switch again to trigger the door to open, the normally open mode will be cancelled.

Each receiver can learn up to 20 transmitters.After the number of first learning emitters will be covered by the new learning emitters

## List

	Accessory	Qty	Unit	Remark
1	Fingerprint attendance access machine	1	pcs	
2	Hand touch switch	1	pcs	
3	Power supply controller	1	pcs	
4	Ic cards	2	pcs	
5	Manual sheet	1	pcs	
6	Certification	1	pcs	
7	Screw	1	bag	
8	3M Dual adhesive tape	2	pcs	Connect with hand touch switch
9	CR2032Battery	2	bag	
10	USB line	1	pcs	